




Certificate of Analysis

SALSA® MLPA® Probemix P200 Reference-1

Catalogue #	P200-100R	
Product name	Probemix P200 Reference-1	
LOT	B1-0719	
	100 reactions.	
Shipping conditions	Dry ice or cooling elements.	
	Store upon arrival between -25°C and -15°C.	
	Expiration date: July 2024, when stored at recommended conditions. This product should not be frozen/thawed more than 25 times.	
Use	This product offers a collection of thoroughly-tested MLPA reference probes and control fragments to which 'home-made' synthetic (MS-)MLPA probes can be added, as described in table 1 of the product description. These probes provide extra assurance about the quality of self-made probes and of the MLPA reaction performed, and they also facilitate the data analysis of your synthetic probemix. This probemix is designed for use only in combination with SALSA MLPA reagent kits and Coffalyser.Net as described in the (MS-)MLPA General Protocol.	
Quality control specifications	<ul style="list-style-type: none"> - Sufficient distance between peaks, absence of extra or shoulder peaks, and completeness of hybridisation of each individual probe, as tested on Applied Biosystems and Beckman/SCIEX GeXP sequencers. - Standard deviation of each individual reference probe ≤ 0.10, when tested on 23 different DNA samples of healthy individuals, extracted by various methods. - Each individual probe meets reaction-specific criteria when tested on a single DNA sample under various experimental conditions. 	Test result
		PASS

None of the ingredients are derived from humans, animals, or pathogenic bacteria. Based on the concentrations present, none of the ingredients are hazardous as defined by the Hazard Communication Standard. **A Safety Data Sheet (SDS) is not required for these products:** none of the preparations contain dangerous substances (as per Regulation (EC) No 1272/2008 [EU-GHS/CLP] and amendments) at concentrations requiring distribution of an SDS (as per Regulation (EC) No 1272/2008 [EU-GHS/CLP] and 1907/2006 [REACH] and amendments). If spills occur, clean with water and follow appropriate site procedures.

More information: www.mlpa.com; www.mlpa.eu	
	MRC-Holland bv; Willem Schoutenstraat 1 1057 DL, Amsterdam, The Netherlands
E-mail	info@mlpa.com (information & technical questions); order@mlpa.com (orders)
Phone	+31 888 657 200

Certificate of Analysis

SALSA MLPA Probemix P200-B1 Reference-1 sample picture

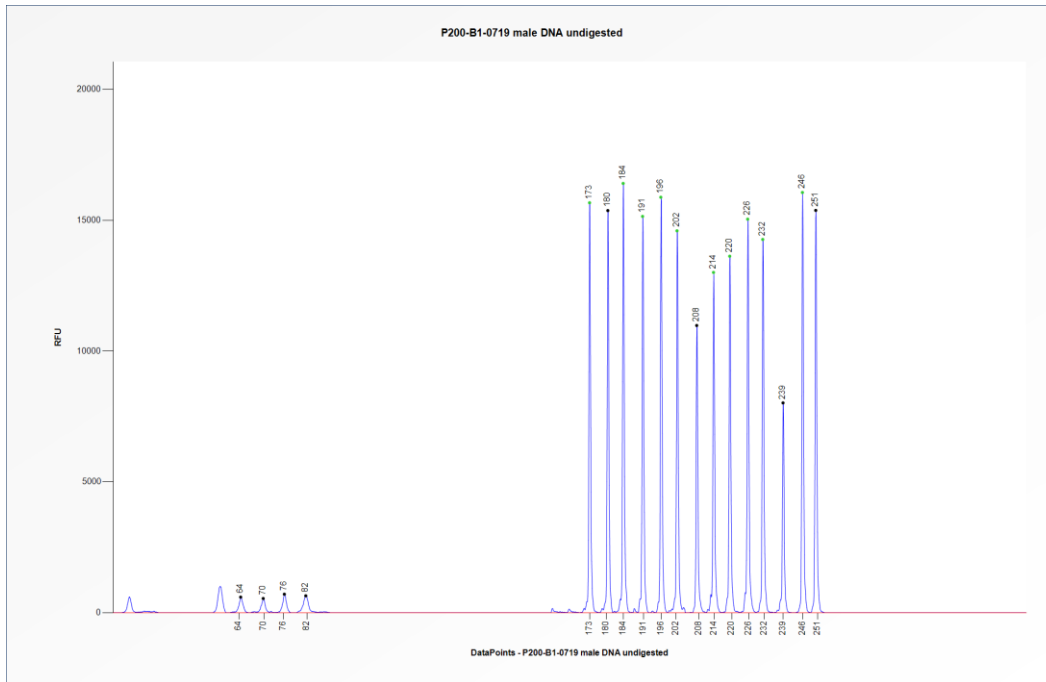


Figure 1. Capillary electrophoresis pattern from a sample of approximately 50 ng undigested human male control DNA analysed with SALSA MLPA Probemix P200 Reference-1 (B1-0719), for the quantification of copy numbers.

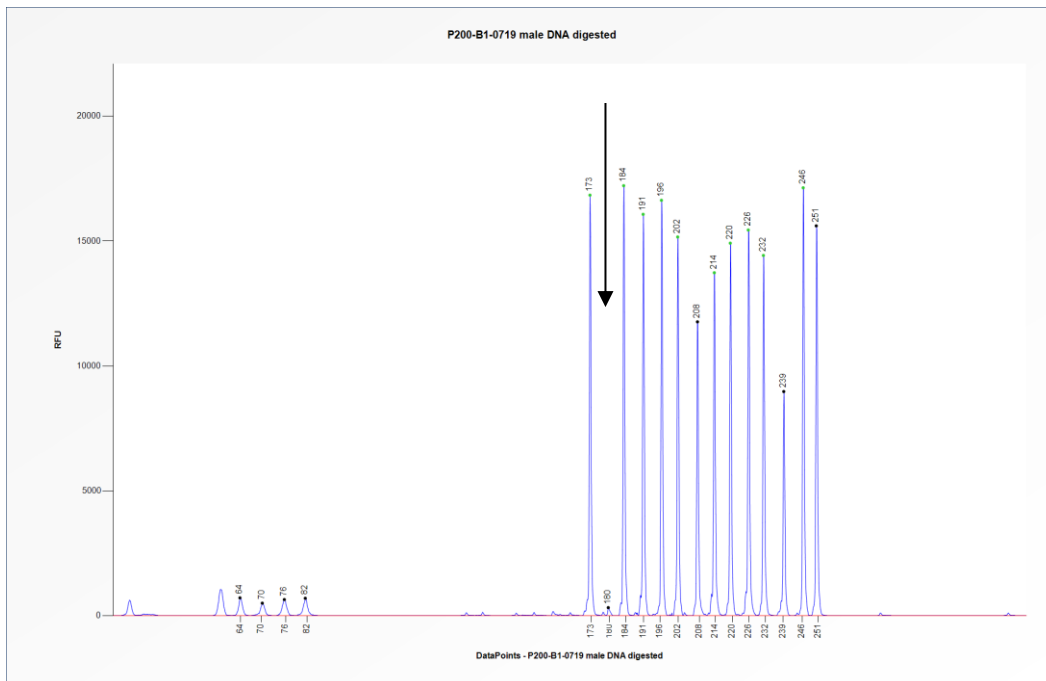


Figure 2. Capillary electrophoresis pattern from a sample of approximately 50 ng digested human male control DNA analysed with SALSA MLPA Probemix P200 Reference-1 (B1-0719), to determine the methylation status. The location of the digestion control probe is indicated by an arrow.

Certificate of Analysis

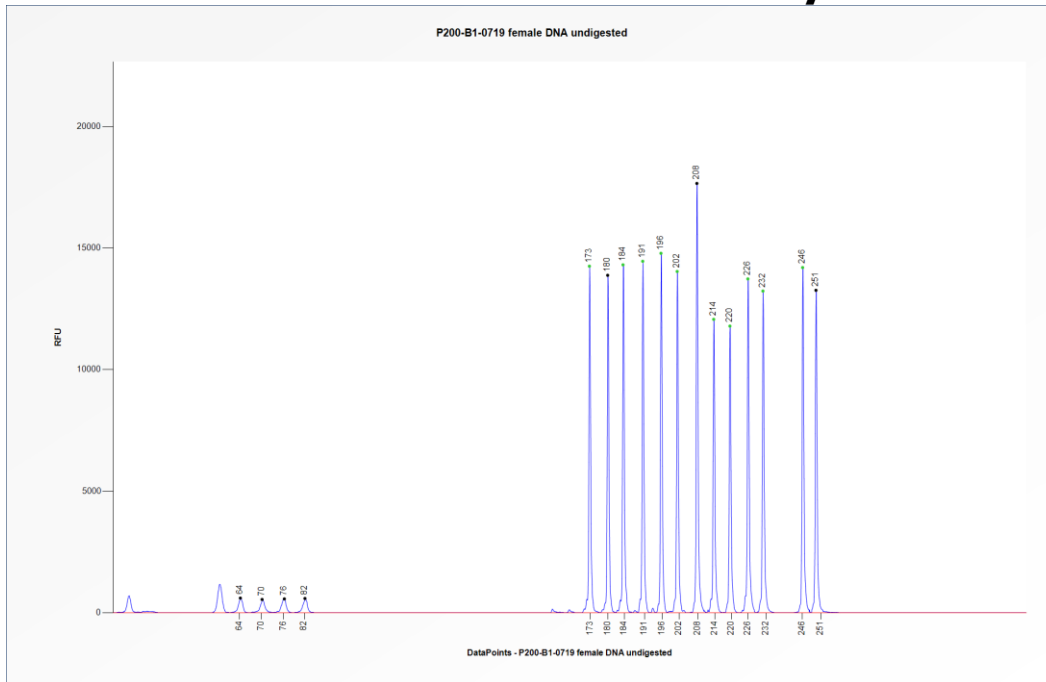


Figure 3. Capillary electrophoresis pattern from a sample of approximately 50 ng undigested human female control DNA analysed with SALSA MLPA Probemix P200 Reference-1 (B1-0719), for the quantification of copy numbers.

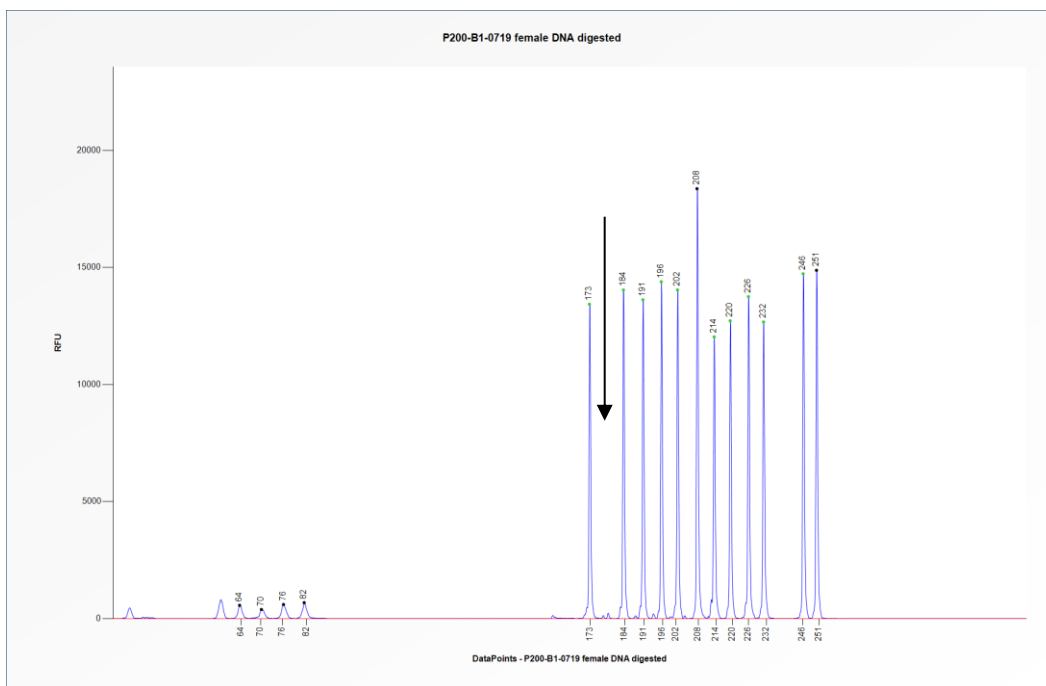


Figure 4. Capillary electrophoresis pattern from a sample of approximately 50 ng digested human female control DNA analysed with SALSA MLPA Probemix P200 Reference-1 (B1-0719), to determine the methylation status. The location of the digestion control probe is indicated by an arrow.

This lot was certified by MRC-Holland on 21 January 2020.

This certificate is a declaration of analysis at the time of the manufacturing process. All assays were run in compliance with manufacturer's instructions for use.

Certificate of Analysis

Implemented changes in the COA
<i>Version 01 – 21 January 2020 (04)</i> - Not applicable, new document.